



Schemas for study of spiritual science

Tables, schemas, illustrations

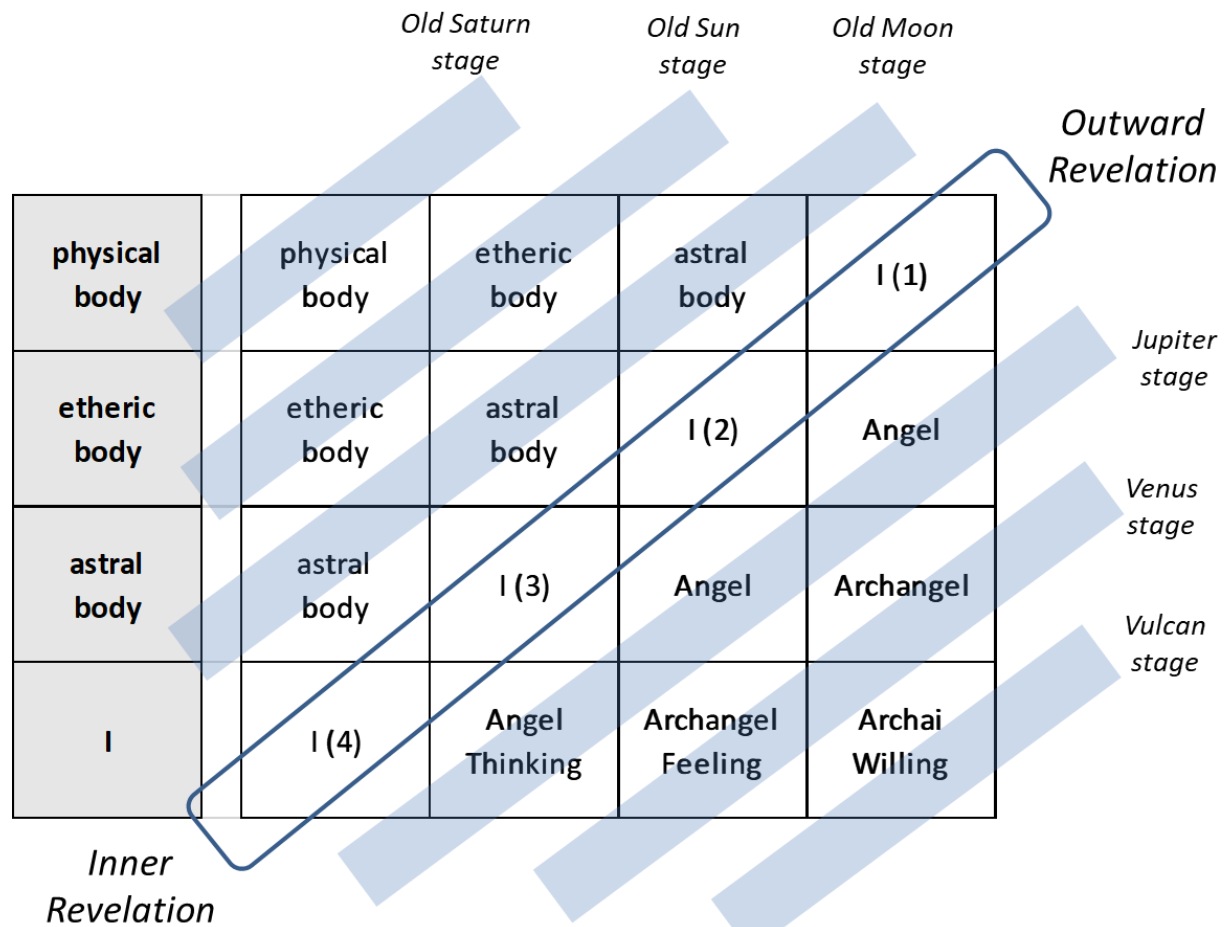
About this file

- This file is a repository with schemas produced by the Free Man Creator project for the systematic study of spiritual science.
- The schemas were produced by Dirk Lepoudre on the basis of the study of the work of Rudolf Steiner and secondary anthroposophical literature. The project developed many such schemas, most still unpublished. Publication started in March 2020 through this repository file made available on the anthroposophy.eu wiki website.
- With reference to 1915-01-09-GA161, the aim was and is
 - to produce schemas for didactic use to support the earnest student of spiritual science in self study. Also
 - to offer an overview and a systematic approach towards synthesis, for facilitating building integrated imaginations. As well as
 - to bring together references to Rudolf Steiner's lectures in a way that adds value, as opposed to a dry list of references.
- The schemas were made along a structured taxonomy per field and study topic, however this repository uses only an index number with no further logical classification of the schemas. An index to the schemas in this Powerpoint deck exists in a separate Excel overview file.
- Within the FPC project files, all schemes can be traced back to digital materials made in Microsoft Office format (Excel, Powerpoint, Word).
- This file will be updated regularly and grow as more schemas are added from working draft stage, as a minimum quality check is done for validation and consistency.

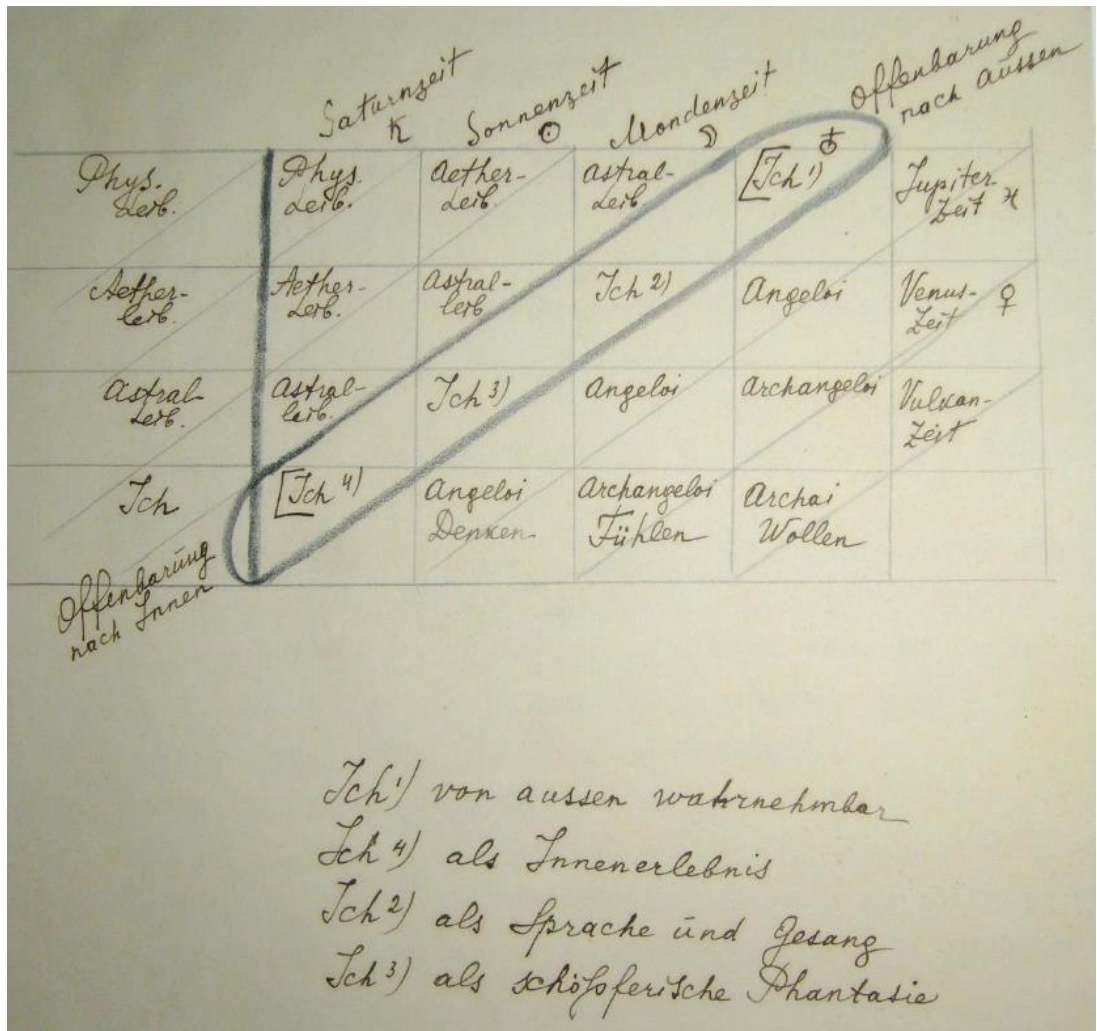
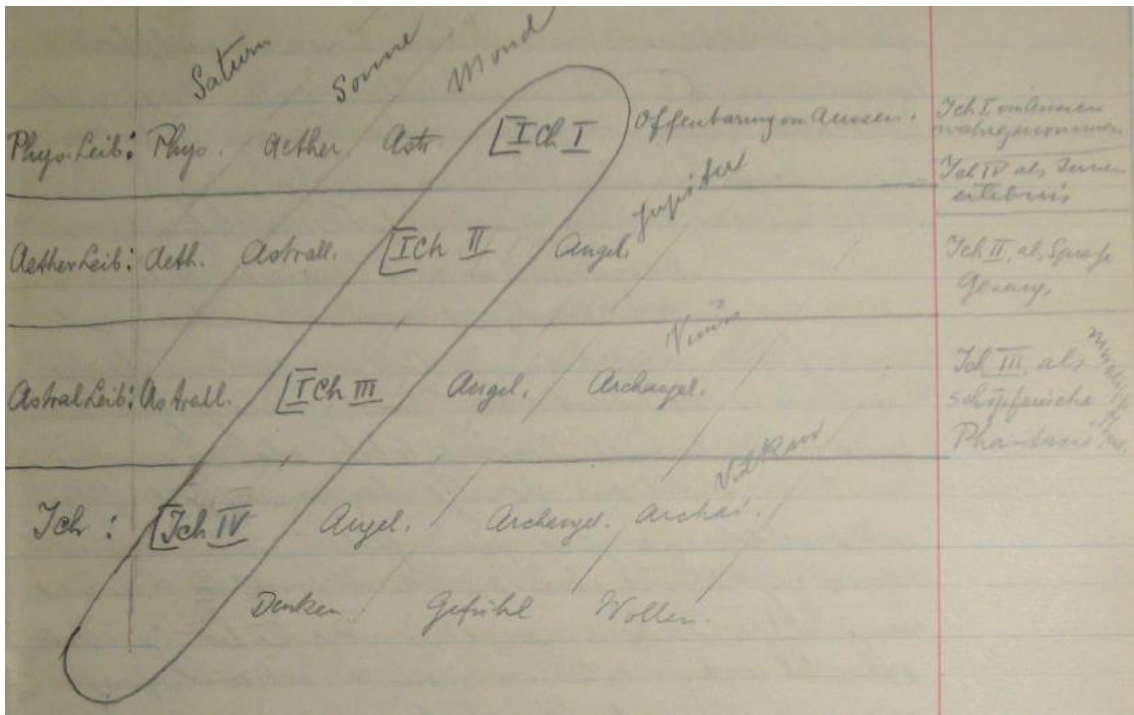
About the schemas

- **FMC schema reference** in format FMC00.001 in **lower left corner** of each slide.
- All illustrations in this file are embedded JPG images, the original tables (XL) and drawings (PPT) are available separately.
- If the schema is linked to only a single Rudolf Steiner lecture (RSL), then that **RSL reference** is in the **lower right corner** of each slide.
- If the schema is linked to multiple sources, the RSL and other sources (eg secondary literature) are listed in the separate overview table (XL).
- For a single schema with a single FMC reference, **variants and additions are labelled with a suffix a, b, c, ..**

These can include for example copies of the original manuscript or typoscript, blackboard drawings, or secondary literature; or additional perspectives to the main schema.



| | |
|-------|-------------------------|
| I (1) | externally perceptible |
| I (2) | as inner experience |
| I (3) | as speech and song |
| I (4) | as creative imagination |



| | Old Saturn stage | Old Sun stage | Old Moon stage | |
|---------------|------------------|----------------|-------------------|----------------|
| physical body | physical body | etheric body | astral body | I (1) |
| etheric body | etheric body | astral body | I (2) | Angel |
| astral body | astral body | I (3) | Angel | Archangel |
| I | I (4) | Angel Thinking | Archangel Feeling | Archai Willing |

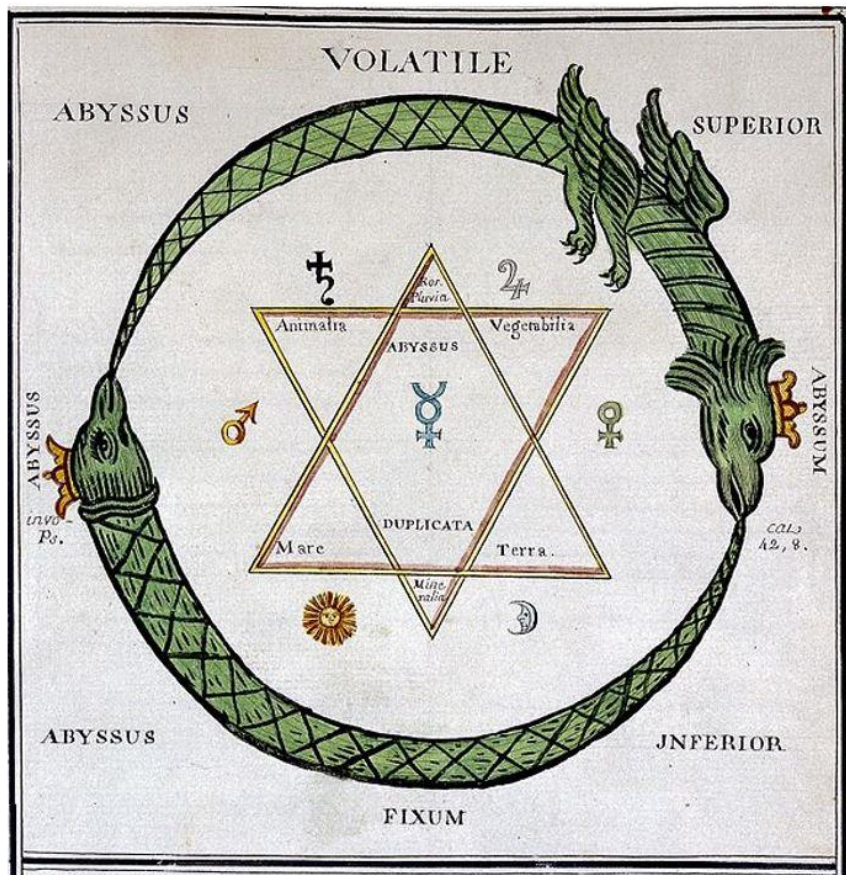
Inner Revelation

Outer Revelation

Jupiter stage

Venus stage

Vulcan stage



*the flying dragon symbolizes .. the stream which sends those forces ..
 .. which stream down from out of the Cosmos to the stiffened dragon,
 showing how heaven and earth hang together, or as it is expressed there:
 'How the spiritual forces of heaven pour into the earth's centre.'*



For instance, those which depict the whole growth of the earth:
'From chaos to that which is called the universal quintessence'
 — a remarkable sentence, curiously mixed up with signs of a
 chaotic nature, still undifferentiated, right through the mineral,
 plant and animal

| planetary sphere | | | ether | | | rhythm or group | | effect | | Earth girdles or zones | | | | |
|--|--|---|-----------|-------------|-------------|-----------------|------------------------|--------------|-----------------------------------|------------------------|--|--|------------------|--|
| | | | | | | | | | | | | | | |
| Saturn | Outer planetary spheres | | I | warmth | condensing | warmth & light | expansive centrifugal | strengthened | lower density | | | | | |
| Jupiter | | | II | light | centrifugal | | | strengthened | | | | | | |
| Mars | | | III | chemical | condensing | | | weakened | | | | | | |
| Sun | | | IV | life | centripetal | | | | | | | | | |
| Mercury | Inner planetary spheres | | V | warmth | condensing | chemical & life | condensing centripetal | weakened | higher density - condensed matter | | | | | |
| Venus | | | VI | light | centrifugal | | | weakened | | | | | | |
| Moon | | | VII | chemical | condensing | | | strengthened | | | | | | |
| | | | Inversion | | | | | | | | | | | |
| Earth | purely etheric spheres of earth's envelope | a | life | centripetal | condensing | centripetal | | | | life formation | vitalisation, source of all life formation | all conditions are polar opposite of what they are around earth (see 'inversion' in Wachsmuth) | | |
| | | b | chemical | condensing | | | | | | chemical | forces spring to life and operate on earth (chemical effects in substances) | | | |
| | | c | light | centrifugal | expansive | centrifugal | | | | light | de-aeration - existence of air is annulled; light on earth comes from this zone (not from sun) | | | |
| | | d | warmth | condensing | | | | | | warmth | very different warmth conditions (than warmth on earth) | | | the warmth-ether consists of two parts, of two layers, the one being the layer of earthly warmth, the other that of cosmic warmth, and these continually play one into the other. Thus we have not only one, but two kinds of warmth, the one which is of earthly, tellurian origin, and the other of a kind which is of cosmic origin. These are always playing one into the other. |
| | | | Inversion | | | | | | | | | | | |
| | outer earth warmth envelope, atmosphere, hydrosphere, solid earth | 1 | warmth | condensing | expansive | centrifugal | | | | warmth | outer layer beyond atmosphere - sort of warmth mantle around earth | | | |
| | | 2 | light | centrifugal | | | | | | air zone | atmosphere | | | |
| | | 3 | chemical | condensing | condensing | centripetal | | | | fluid zone | | | | |
| | | 4 | life | centripetal | | | | | | earth formation | solid structure of the earth | | | |
| | | | Inversion | | | | | | | | | | | |
| | Inner earth | 5 | chemical | condensing | condensing | centripetal | | | | | | | | |
| | | 6 | light | centrifugal | | | | | | | | | | |
| | | 7 | warmth | expansive | | | | | | | | | | |
| | | | | | | | | | | | | | | |
| Gunther Wachsmuth The etheric formative forces in Cosmos Earth and Man, Vol 2 | | | | | | | | | | 1920-03-31-GA312 | | | 1923-10-27-GA230 | |

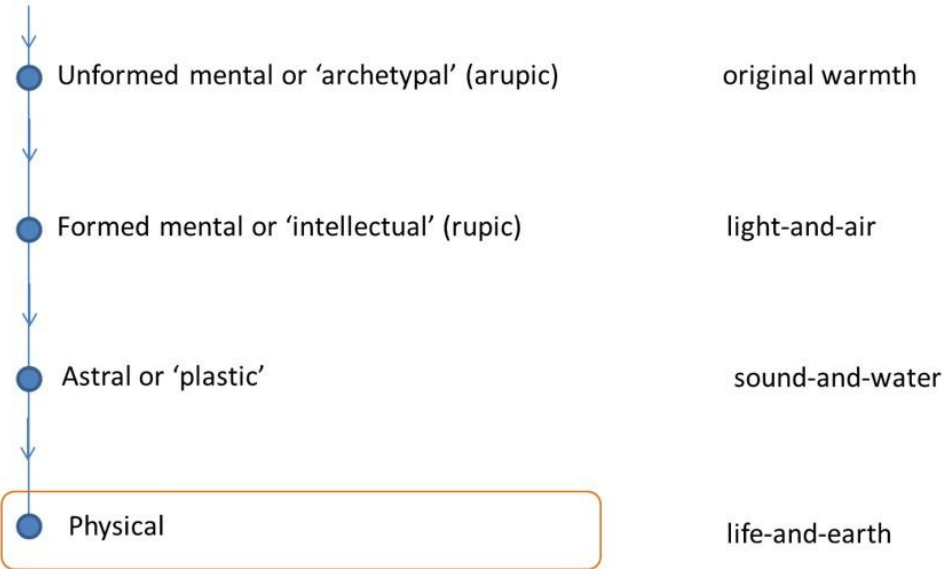
| | planetary forces of .. | | | | element | effect of these forces | what if these forces were missing | notes | metal correspondence | | planetary 'existence' reveals those forces in the cosmos which implant into man's nature .. OR: what wells up in the form of .. is of the nature of .. | notes |
|---|---------------------------|--|--|-------------------|--|---|---|---------------------------|--|--|--|---|
| | | | | | | | | | | | | |
| | | | viewed from human being's earth perspective, from 'inside' (physical timespace of the senses) | | | | | | | | viewed from spirit-soul perspective, from 'outside' (eg as between death and new birth) | |
| | | | | | | | | | | | | |
| not present in human organism in this material form .. they are there, but in a different form, not immediately detectable | saturn | protect the human being from flowing away into | chemical | chemical ether | these forces protect man from dissolving in the Chemical Ether | | Penetrating as they do into the human constitution, these Saturn- forces are connected, in a certain sense, with the innermost essence of man's nature. We speak of a "sour" or a "sweet" disposition, for example, more in a metaphorical sense. But these things are not merely metaphorical; if a human being makes an impression of sourness in the moral-physical sense, this has some connection with his chemical make-up. And the Saturn-forces have their share in this chemical make-up. The particular manner in which a human being gives expression to his nature as a whole depends upon the way in which Saturn is working in him. A melancholic person has this particular temperament because he lives very strongly in his chemical constitution, in everything that seethes and is astir in the liver, in the bile and even in the stomach; the melancholic temperament is therefore due to this living into the chemical make-up of the organism. And this characteristic again is due to the fact that in such a person the Saturn-forces work with particular strength. | lead | qualities bound up with the human organism | | instinct | still entirely of an animal nature |
| | jupiter | | light | light ether | protect man from dissolving away in the element of Light, in the Light Ether | He would become an ever-expanding cloud of light if the Jupiter- forces were not present and at work | make it possible for man not to flow away in the light but to maintain himself as an independent being of spirit-and-soul within the light | tin | | | inclinations, sympathies | an element of soul (animal-psyhic) is already evident In its aspect of spirit-and-soul, Jupiter enables inclinations, sympathies, to arise, to take shape, to be engendered |
| | mars | | warmth | warmth/fire | protect us from the tendency to flow out and away in the element of Warmth | If the Mars-forces were not present and functioning in the right way, man would have the constant tendency to dissolve in the Warmth. The Mars-forces hold him together, guard him from this. This is a matter of supreme importance, for since the warmth in man's organism is greater than the warmth of his environment, he is in perpetual danger of flowing away in the element of Warmth. To prevent this is of the very greatest importance. Therefore there must be a concentration of the Mars-forces in the human organism. And this is brought about through the presence of iron in man's blood. Iron contains forces that are identical with those of Mars and they hold man together in opposition to the tendency to dissolve away into the warmth. | do not enable us to take hold of something, but they protect us from dissolving away in the element of warmth | iron | | | moral impulses (unconscious, by disposition) | spring as it were from his whole character and fundamental disposition. Whether a man is courageous in his moral conduct or whether he is slack in this respect depends upon the forces that come into our ken when we view the Mars order of existence from the other side. — I am speaking, not of the fully conscious moral impulses described in my Philosophy of Spiritual Activity as rooted in pure thinking, but of moral impulses in which there is invariably a considerable degree of unconsciousness. |
| | sun | balancing the polarities | | | | | | | gold | | | |
| | | | | | | | | | | | | |
| | mercury | bring the human being into connection with the | solid | earth | man can take hold of the solid constituents of his body. | If there were no Mercury-forces in the world, we should be outside the solid constituents of our body all the time | When we want to walk we must have certain forces by means of which, from out of the spirit, we permeate our bones and muscles. With our spirit-and-soul we have to penetrate into the physical, into the solid constituents of our body. That we are able to do this is due to the Mercury-forces | mercury or quicksilver | inward qualities which are a more integral part of man | | cleverness, sagacity | the forces which represent this element of intelligence in the cosmos, and are born with us as our intellectual gifts, our sagacity — these forces pertain to the Mercury-nature in the universe |
| | venus | | fluid | water | enable man to take hold of the fluids in his body | You know that 90 per cent of you is a column of fluid. So if the Venus- forces were not in the world you would be obliged as beings of spirit to move around the outside of this column of fluid; you could not take hold of the fluids if the Venus-forces were not in the world. | | copper | | | love | |
| | moon | | aeriform | air | enable man to take hold of the aeriform element in his organism | | | silver | | | imagination (phantasy) and memory | memory — not the organic activity underlying acts of remembrance but the activity that is present in the forming and shaping of mental pictures, of ideas. The pictures of memory are really identical in nature with the pictures of imagination, only they arise as faithful reproductions of the corresponding experiences. |
| | | | | | | | | | | | | |
| | | | | | | | | | | | | |
| | 1922-06-30-GA213 | | | | | | | | | | 1922-07-01-GA213 | |

Conditions of Form

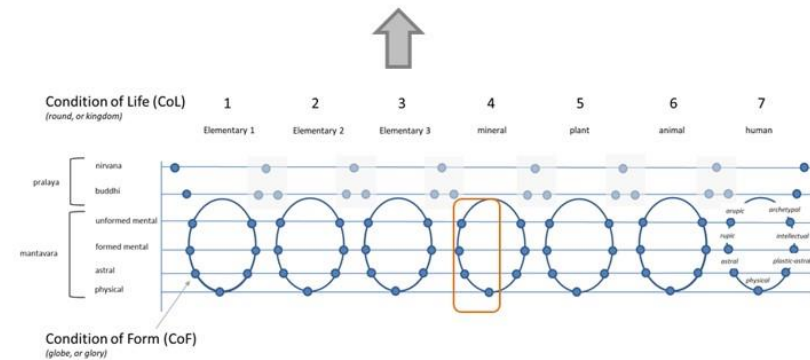


Appearance of *pairs*

Spectrum of form appearances



| | | |
|------------------|-------|--------------------------------|
| 7 | Z | Life |
| 6 | Y | Chemical |
| 5 | X | Light |
| 4 | fire | Warmth region |
| 3 | air | Gaseous |
| 2 | water | Fluid |
| 1 | earth | Solid |
| U | U | Sub-physical world |
| | | electricity |
| | | magnetism |
| | | terrible forces of destruction |
| 1920-03-09-GA321 | | 1911-10-01-GA130 |



Three Subsystems in Man



1924-06-30-GA317



the ego organisation red
the astral organisation purple
the etheric organisation yellow
the physical organisation white

Head: centrifugal:

we go outwards from ego to physical body



Breathing out

Rhythmic system:

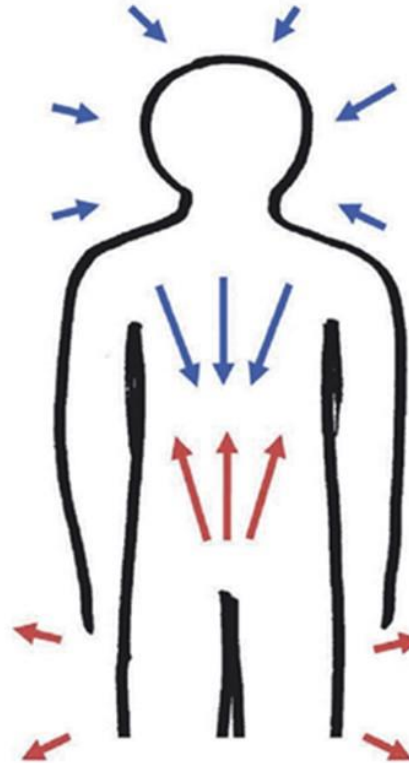
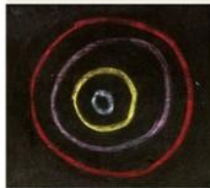
in perpetual flow and interchange



Breathing in

Metabolism & limbs:

centripetal:
we go inwards from ego to physical



HEAD – SENSE and NERVE

Waking consciousness
Thinking
Root

Old Saturn > Old Sun > Old Moon

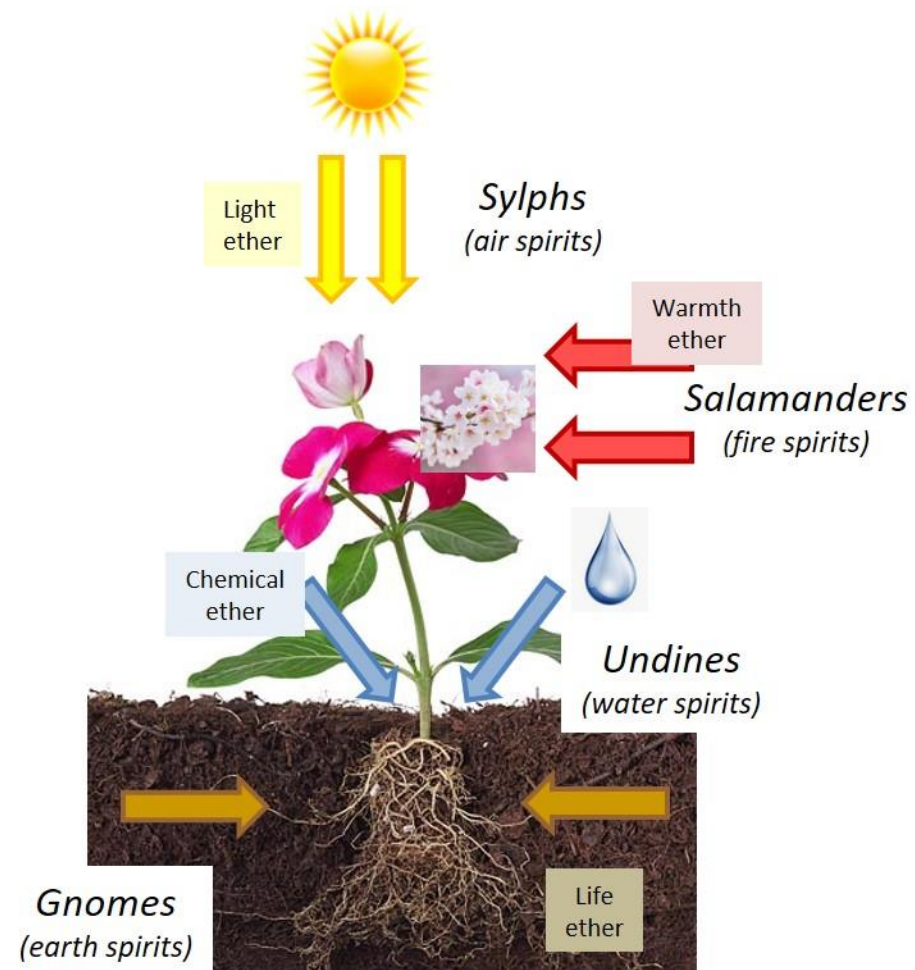
RHYTHMIC

Dream consciousness
Feeling
Leave
Earth

METABOLIC LIMB

Sleep consciousness
Willing
Flower

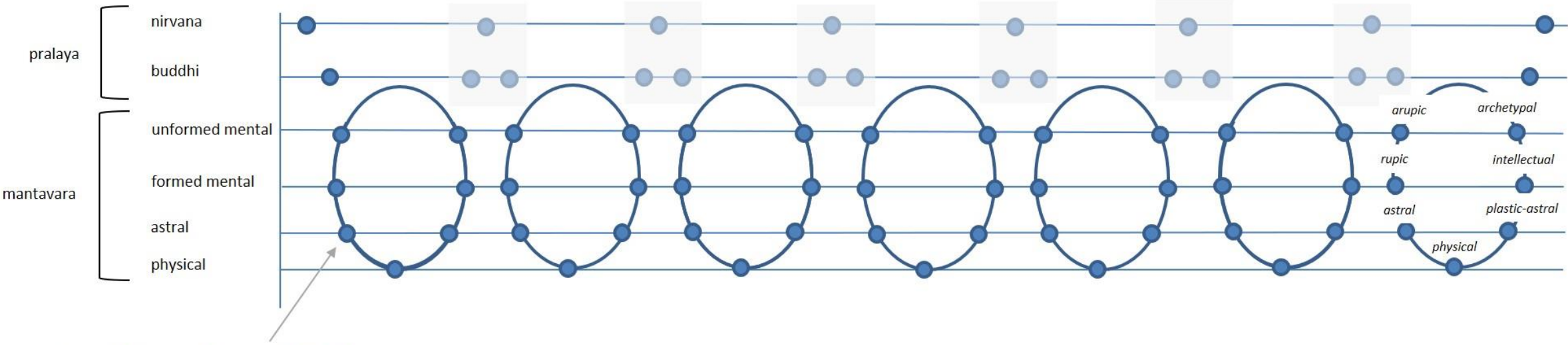
Future Jupiter > Future Venus > Vulcan



Condition of Life (CoL)
(round, or kingdom)

1 2 3 4 5 6 7

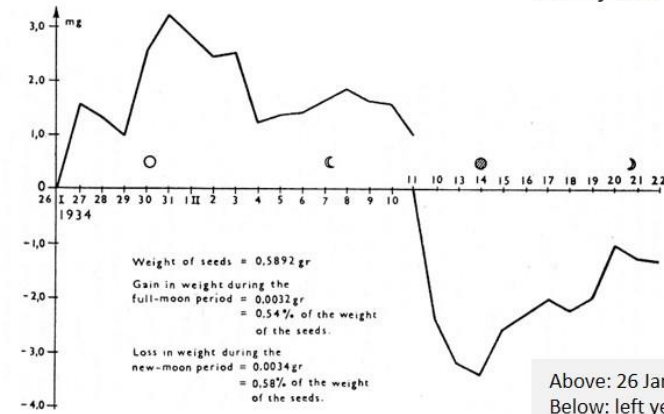
Elementary 1 Elementary 2 Elementary 3 mineral plant animal human



Condition of Form (CoF)
(globe, or glory)

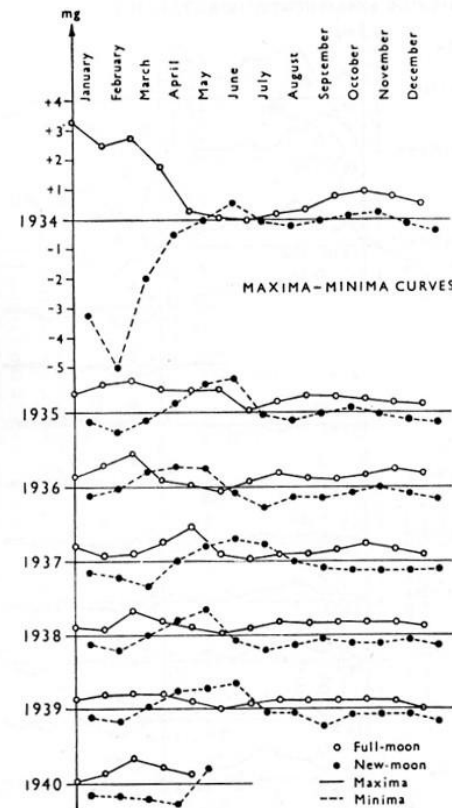
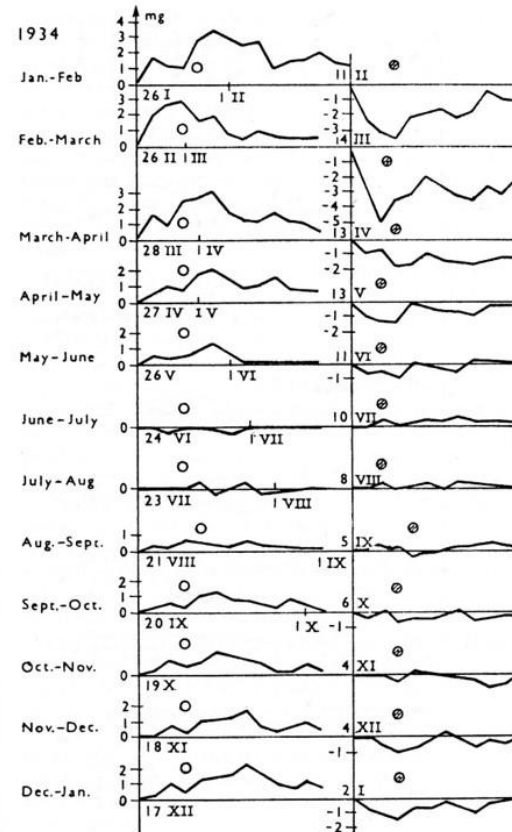
Weight changes of sprouting seeds in a closed system

Rudolf Hauschka, Nature of substance

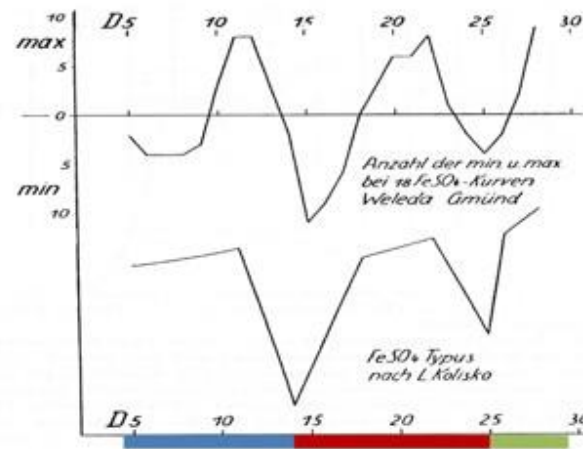


Above: 26 Jan to 22 Feb 1934

Below: left year 1934, right period 1934-40

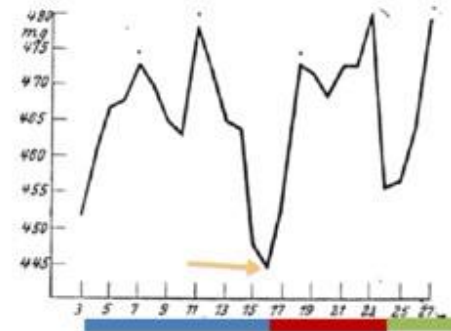


Example Potentization curves

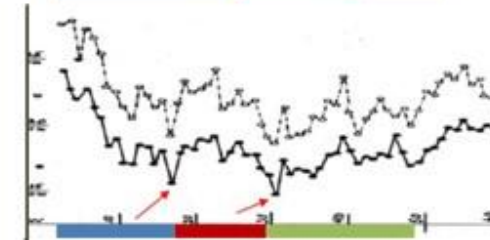


[1]

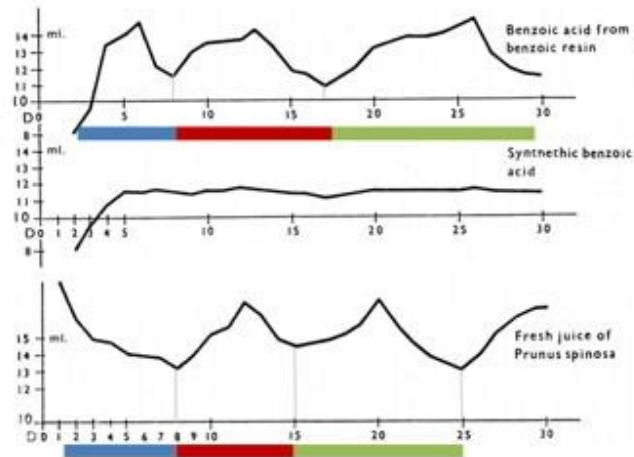
[2]



[6]



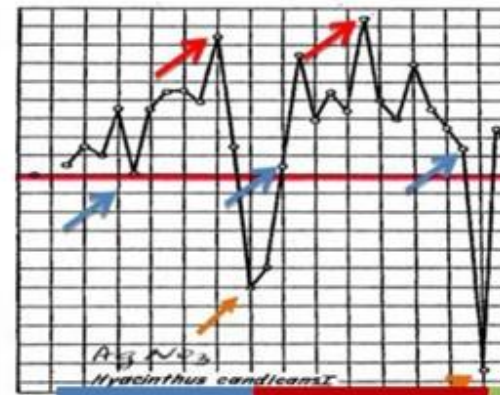
[7]



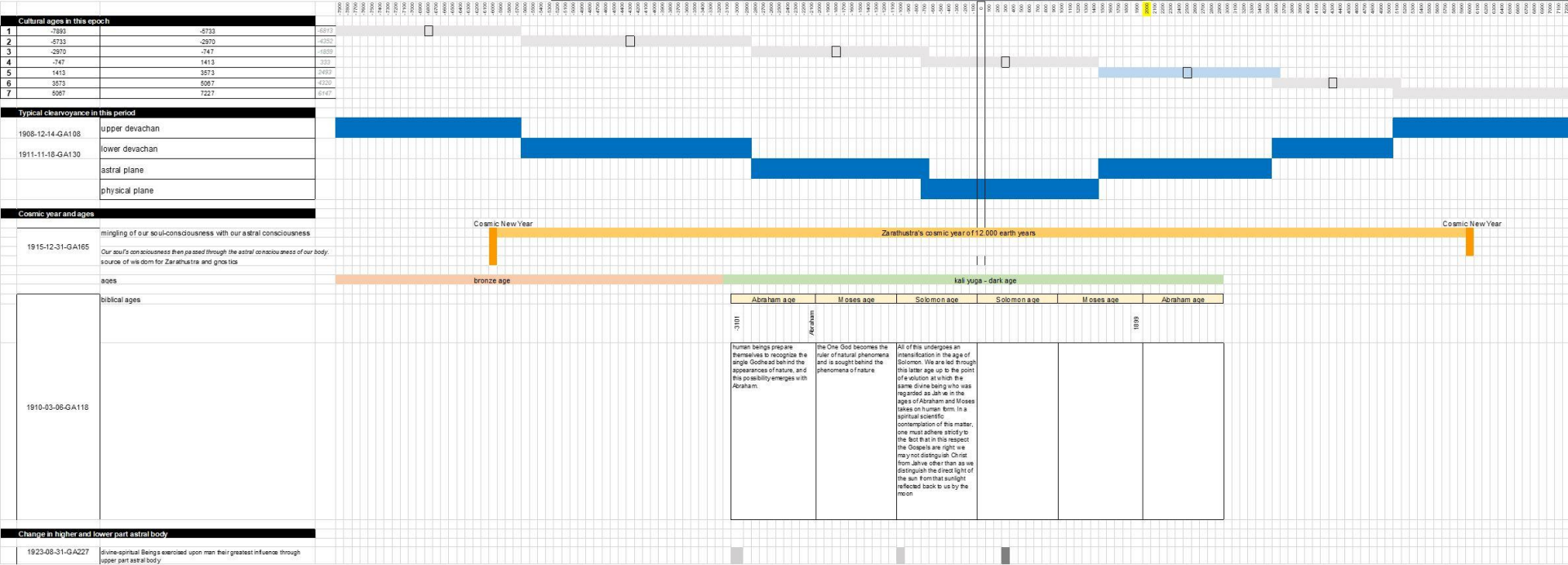
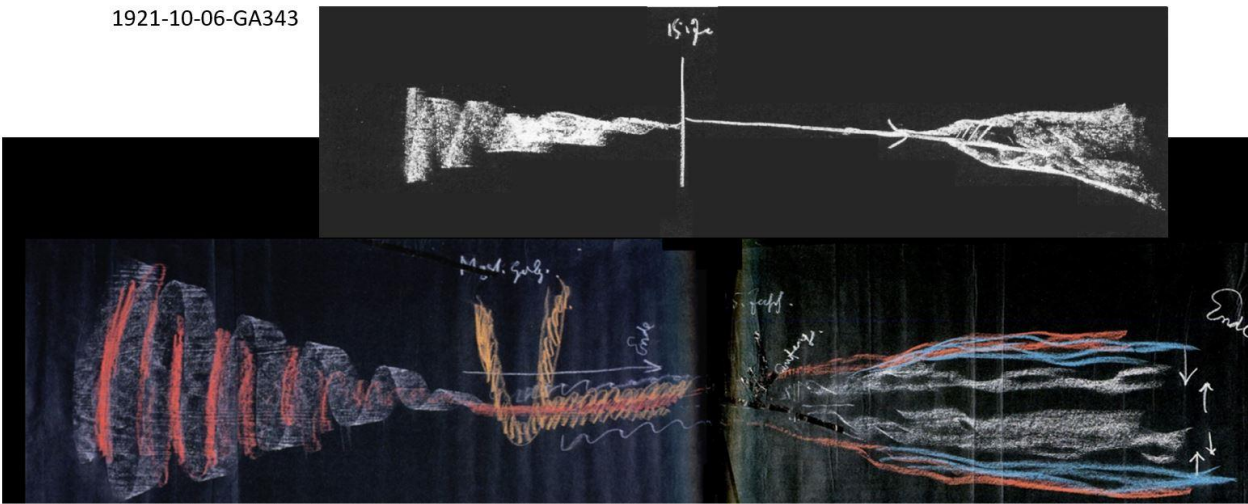
[3]

[4]

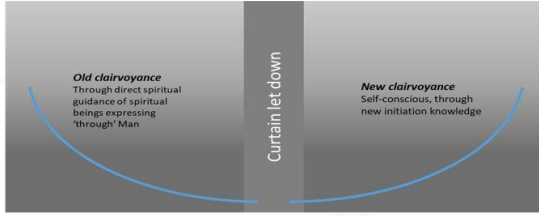
[5]



[8]

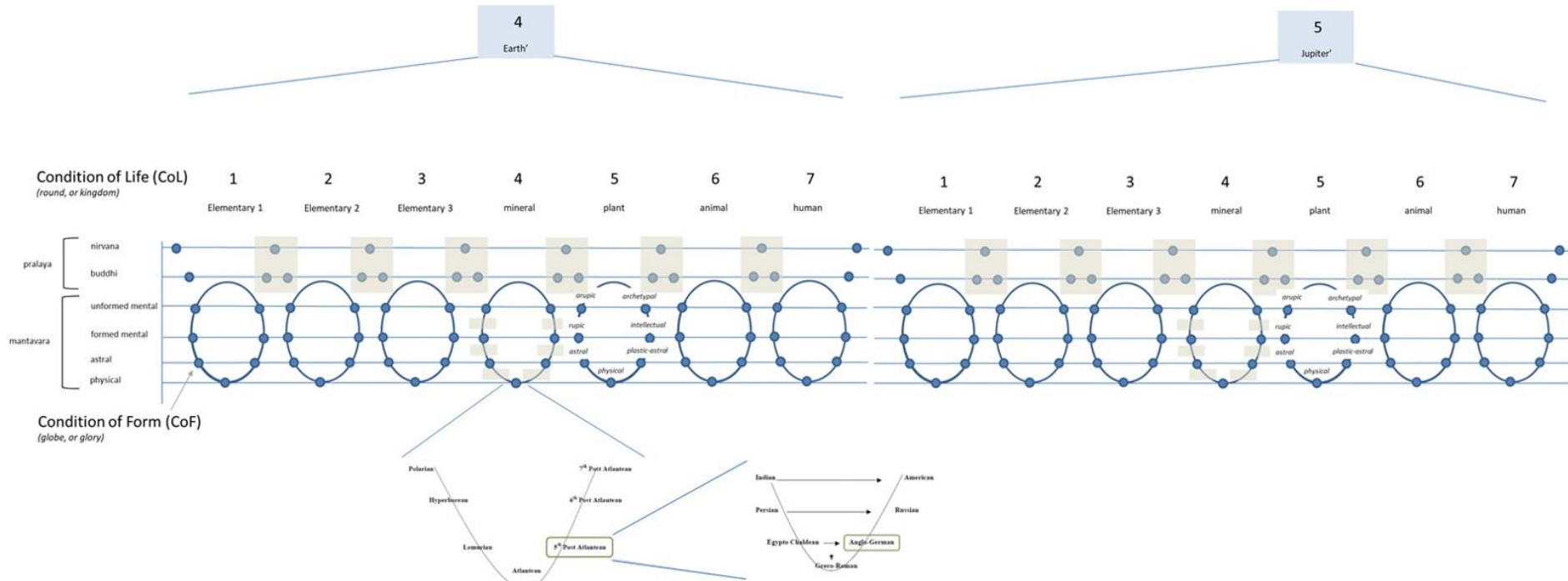
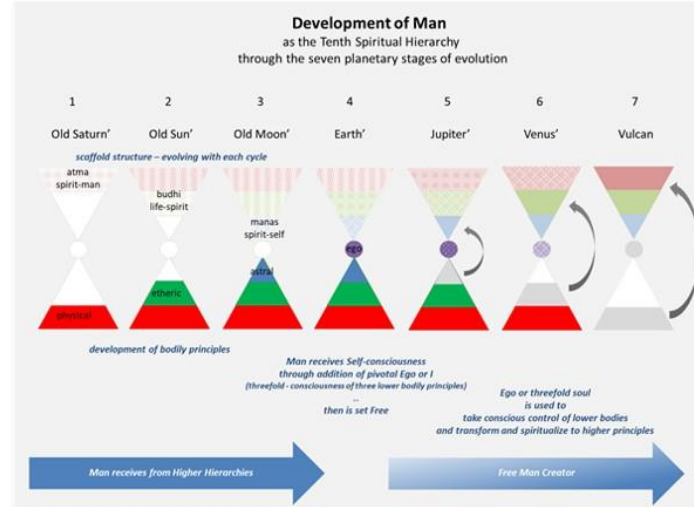


Continuation from Atlantean epoch



Continuation into 2nd epoch

A new form of consciousness - egoism



Sixth epoch

Postatlantean

Atlantean

John
(spiritual)
Tending to the future
sixth race

Luke
(kama)

Mark
(etheric)

Matthew
(physical)

1905-08-14-GA091

Cultural age

Apostle number

2

1

7

6

5

4

3

2

1

7

6

5

1

2

3

4

5

6

7

8

9

10

11

12

Sixth epoch: 1 and 2 are looking to what's coming, the second is Upright.

Apostle 3 is blocking with hands, Seventh age a lagging culture

Interesting symmetry in the V between Christ Jesus and 'John' (who looks absent) See also: John Baptist/Evangelist with Christ-Jesus *together* in 4th age. John carries further the message & work so represents the fourth age Observe the direction toward the left, except for: next apostle's 'moving' dynamic connecting to John but actually going against the natural direction (to the left). Link with betrayal in GA91 lecture.

1-2-3 are and look most closely towards the Christ, first three cultural ages on the outlook

Thomas the 'Twin' <-> Gemini: two arms and hands open:

Re 1911-01-21or23-GA264: 'The second post-Atlantean age was the age of the Twins (Thomas, the 'Twin')'

5th Atlantean subrace gives through (see below) 6 en 7th look *against this stream* or direction of development, look backwards, look away from Christ (lagging cultures)

though the sequence of hands does 'transmit' and lead towards 1st Postatlantean subrace

Interpretation and notes by DL 2019



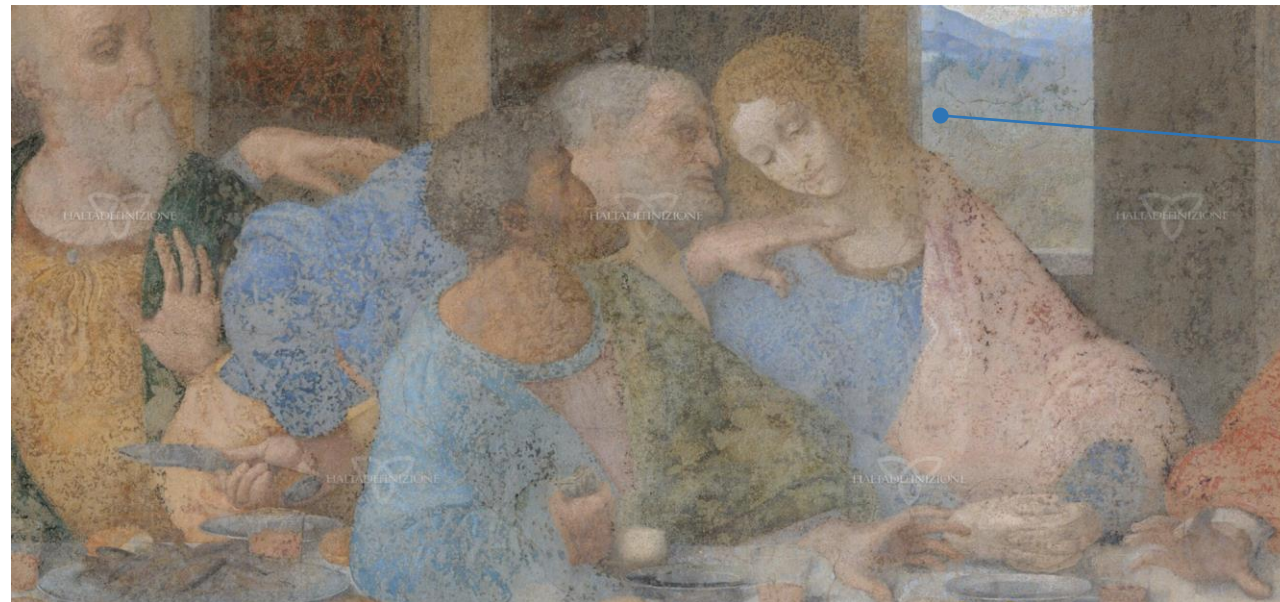
| zodiac sign | number age of epoch | epoch | cultural age | "twelve apostles reflecting 12 subraces" | Apostle numbering | 12 apostles each one 'age' like Judas the 5th postatlantean |
|-------------|---------------------|---------------|----------------------|--|-------------------|---|
| scorpio | 2 | sixth | | 5 | 12 | 1 |
| sagittarius | 1 | sixth | | 4 | 11 | 2 |
| capricorn | 7 | postatlantean | | 3 | 10 | 3 |
| aquarius | 6 | postatlantean | | 2 | 9 | 4 John |
| pisces | 5 | postatlantean | current Anglo-German | 1 | 8 | 5 Judas |
| aries | 4 | postatlantean | Greco-Latin | 7 | 7 | 6 |
| taurus | 3 | postatlantean | Egyptian-Babylonian | 6 | 6 | 7 |
| gemini | 2 | postatlantean | Persian | 5 | 5 | 8 Thomas |
| cancer | 1 | postatlantean | Indian | 4 | 4 | 9 |
| leo | 7 | atlantean | Mongols | 3 | 3 | 10 |
| virgo | 6 | atlantean | Akkadians | 2 | 2 | 11 |
| libra | 5 | atlantean | Primal Semites | 1 | 1 | 12 |

1906-02-13-GA097

1906-10-04-GA091

1911-01-21or23-GA264





Note the so-called 'feminine appearance'. Some sources state this is the way some young men look and which is how John was sometimes depicted to be, there are other works by Da Vinci's representing John the Baptist with a 'rather woman-like face'.

See comments on finger pointing by Norbert Glas in The Hands (painting John Baptist by Da Vinci, maybe his final painting 1513-16)



Glas compares with the finger raising apostle he calls Thomas in the Last Supper painting and interprets accordingly based on Thomas raising the finger. However he also writes:

"the index finger of the right hand of the Baptist in Leonardo's painting is directed upward. John points with his finger into the sky, from which the saviour which he may announce prophetically will descend. This finger directs Man upward to the Most High: "This was he of whom I spoke, He that cometh after me is preferred before me: for he was before me. And of his fullness have all we received, and grace for grace." (The Gospel of John, 1, 15-16)."



This apostle with red coat is important: tending or reaching whole- heartedly towards Christ-Jesus and pointing to his heart. Face-wise also similarities with other paintings John. Before restauration pictures also show remarkable same red clothes colour as Christ-Jesus (see next slide for example)

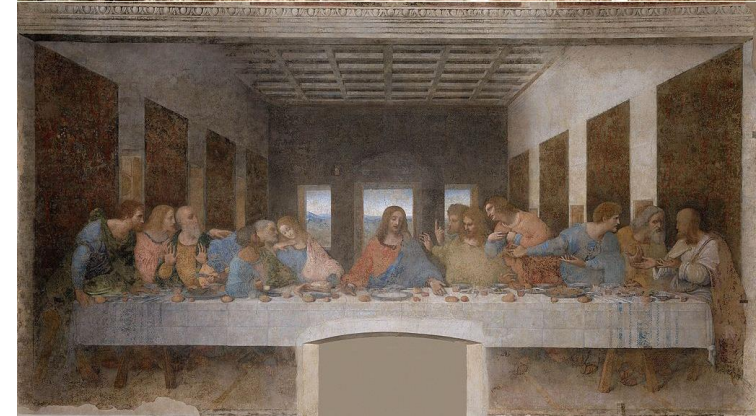
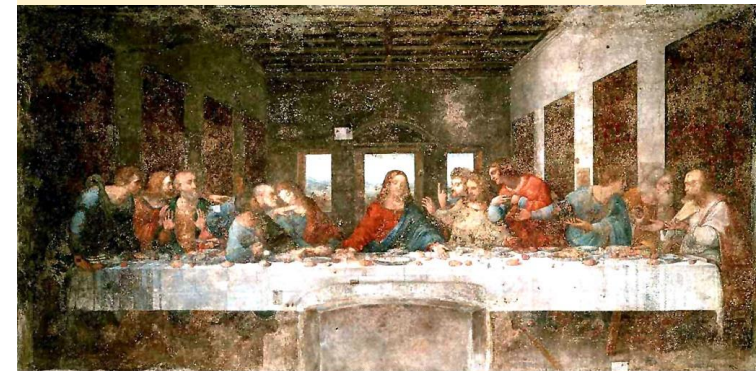
Above: the famous mystery 'hand without owner'. Notice a) piece of arm in same skin colour as hand, in normal continuation of hand, b) the dark shadow continuation of the blue sleeve and arm of the 'moving' apostle with the grey beard. The way the knife is held and the position of the hand are impossible for his body position. The dark sleeve-arm continuation appears as if someone wants to hold/stop the hand holding the knife. Very unlikely this is how Da Vinci painted it originally (see picture before restauration on the right next to it).

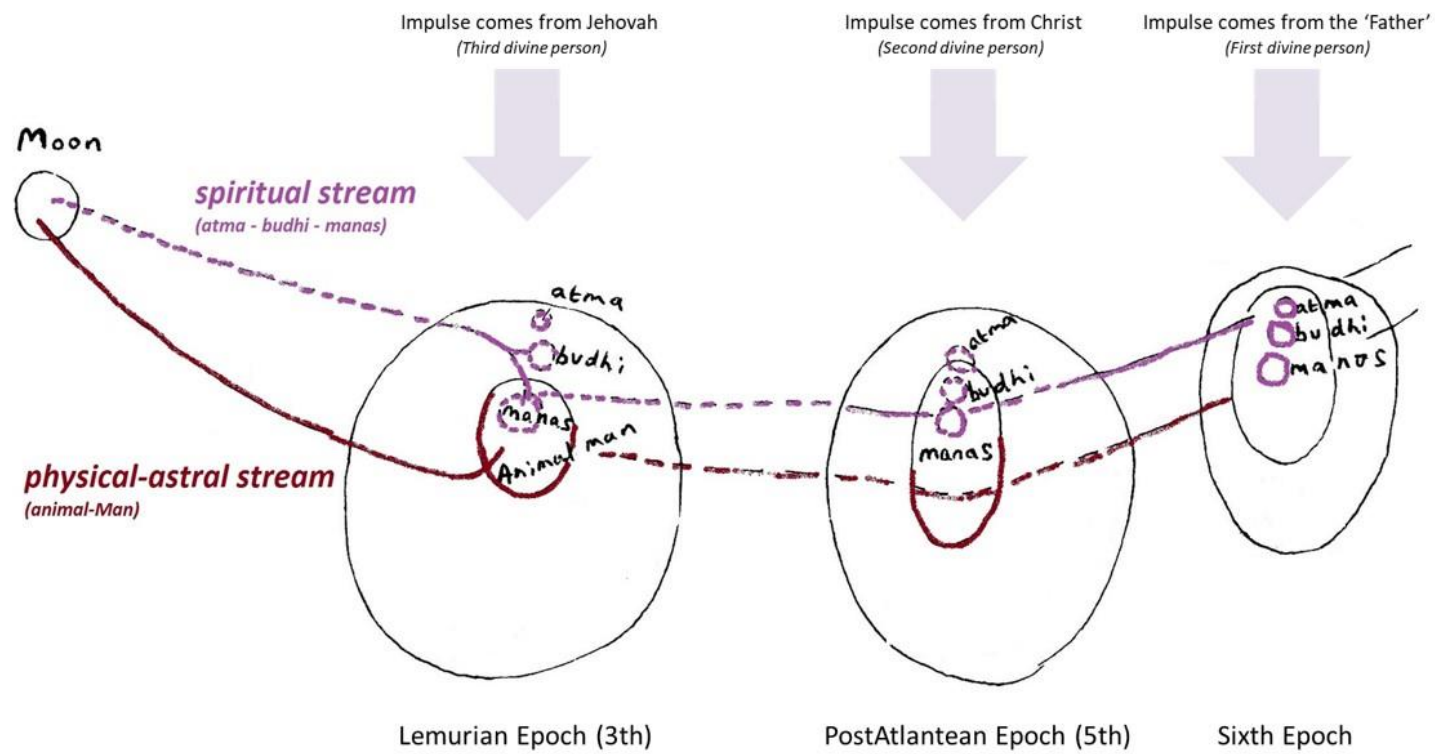




detail of picture before restauration, compare hand holding knife

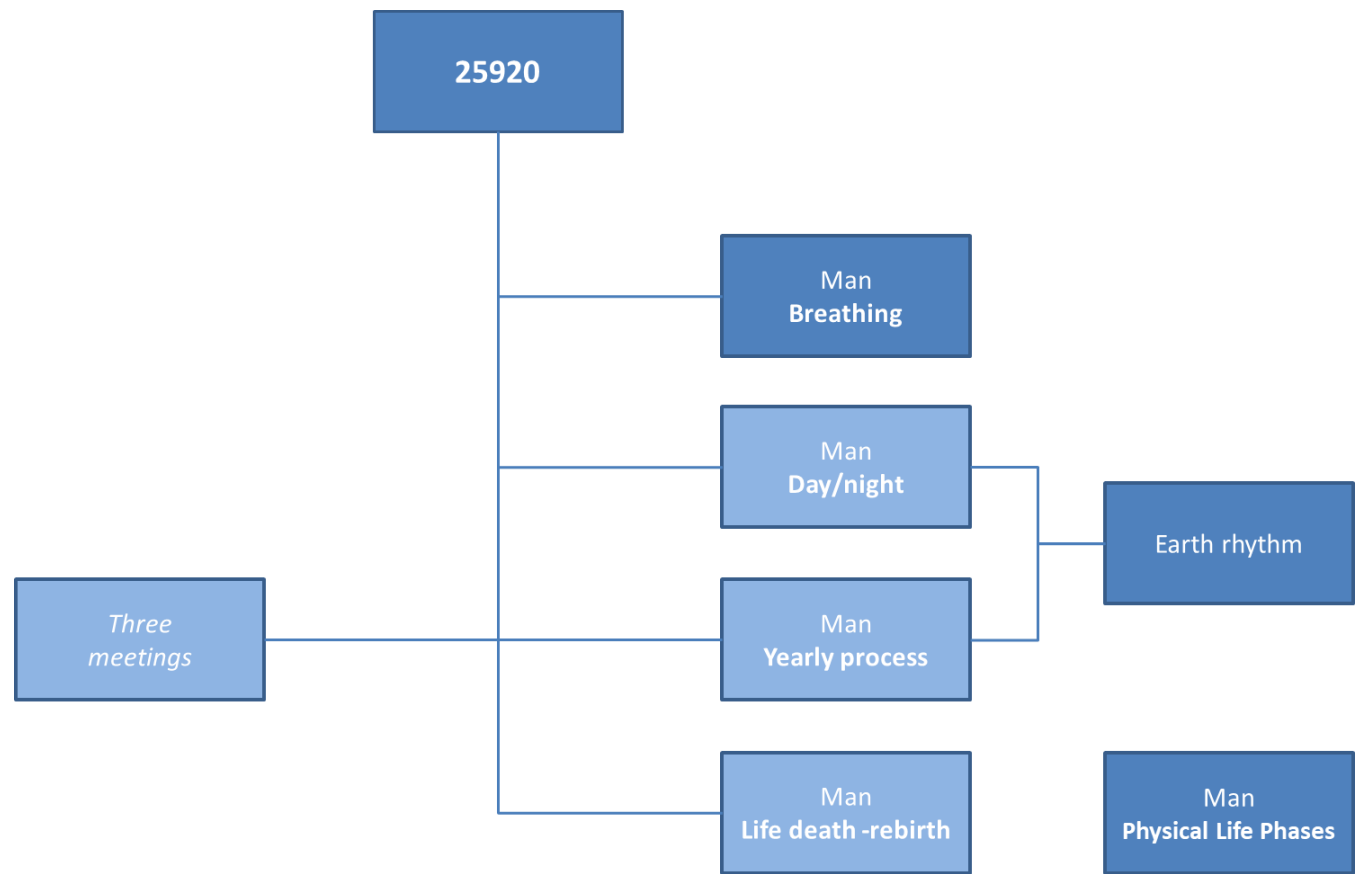
20th century restaurations in 1924, 1947-1954, and 1978-1999



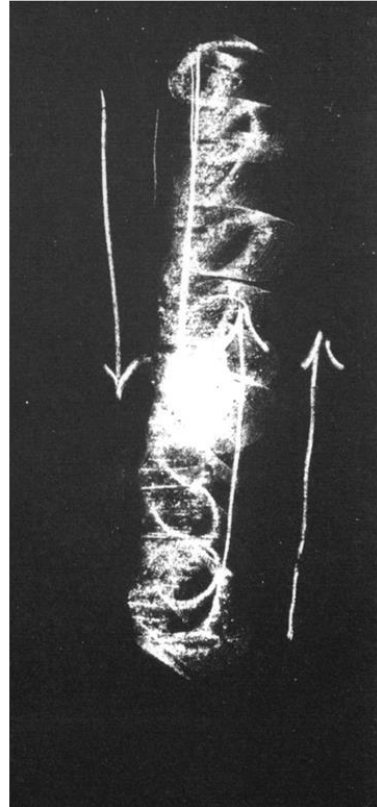
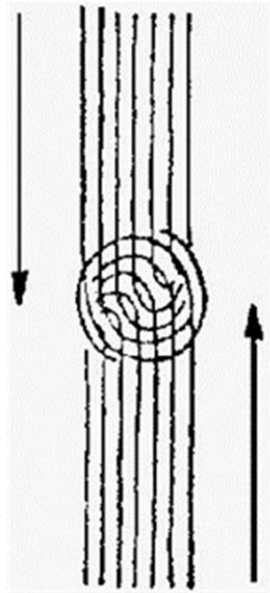


| Meeting No | What? | Rhythm | When? | | .. in process of evolution | ... born by a being belonging to the Hierarchy of .. | Principle | Notes | | Impact scope and orientation | | Connection with order of nature | |
|------------------|---|--------|---|--|----------------------------|--|-----------|--|--|------------------------------|--|---------------------------------------|---|
| | | | | | | | | | | | | | |
| 1 | Ego with spirit self (nightly meeting with genius or guardian angel) | day | flexible - hour not fixed | | spirit self | angeloi | spirit | | | Future | germinal forces for next incarnation, whole of future life | free of order of nature | above and below: ego and astral body go out during sleep, inserted in that what is above |
| 2 | astral body with life spirit | year | around Xmas | | life spirit | archangels | son | meeting with Christ, reveals himself at this level | | | | connected with the order of nature | before (east) and behind (west) |
| 3 | | life | middle life, normally between 28 and 42 years | | spirit man | archai | father | of great significance for the life spent between death and a new birth [1] | | Past | carry-over from former incarnations (impacting physical next incarnation) | free of order of nature | inner and outer |
| | | | | | | | | | | | | | |
| 1917-02-20-GA175 | | | | | | | | | | 1917-02-27-GA175 | | | 1917-03-13-GA175 |

| hierarchy | | | | planetary sphere | | irregular beings | denoted as .. | body consists of .. | to be found on earth in .. | influence pulling towards | | origin in Man | regulating .. | influence on Man - aim of these beings | would like to make Man into .. | | soul of human being | spiritual of human being | | |
|------------------|------------|-------------------------|--|------------------|---------------------------------------|------------------|--|---------------------|--|--|-------|--|--------------------------|--|---|--------------------------|---------------------|--------------------------|---------------|--|
| third | angels | | | Moon | | Ahrimanic | immature Moon, Mercury and Venus beings | water and earth | within the solid and the fluid components of the Earth , earth and water | ebb&flow of the tides, volcanic eruptions, earthquakes | earth | sneaked into I whilst transfer into etheric body | upper human being | to give man an etheric body composed of the Earth's ether whenever he is asleep (persuading him that evil is good and good evil) | pull the human being completely into the earthly, to harden him, to make him similar to themselves Were they to be successful, man would become extremely clever in the material realm — incredibly clever and intelligent | an intelligent automaton | | legitimate | illegitimate | |
| | archangels | | | Mercury | | | | | | | | | | | | | | | | |
| | archai | | | Venus | | | | | | | | | | | | | | | | |
| second | powers | Spirits of Form (SoF) | | Sun | | Luciferic | immature Mars, Jupiter and Saturn beings | air and warmth | have the conditions for their existence or their habitations in the warmth and in the air surrounding the Earth. | wind, weather, clouds | stars | sneaked into I whilst transfer info astral body | lower instinctive nature | to make man into a moral automaton (no freedom, Man not listening to own instincts, desires, voice of his blood) | | a moral automaton | | illegitimate | legitimate | |
| | dynamis | Spirits of Motion (SoM) | | Mars | | | | | | | | | | | | | | | | |
| | dominions | Spirits of Wisdom (SoW) | | Jupiter | | | | | | | | | | | | | | | | |
| first | thrones | | | Saturn | | | | | | | | | | | | | | | | |
| | cherubim | | | fixed stars | | | | | | | | | | | | | | | | |
| | seraphim | | | | | | | | | | | | | | | | | | | |
| 1909-04-12-GA110 | | | | 1923-11-13-GA231 | 1922-11-16-GA218 and 1922-12-03-GA219 | | | | | | | | | | | | | | Rebholz essay | |



The form of the human heart is the result of the interaction of two opposing flows with different velocity



1920-05-14-GA201



The shape of the etheric configuration of the human being is formed by the transformation of the vortex formed by the mutual impact of the two streams constituted of different kinds of ether

Light and warmth ethers
centripetally

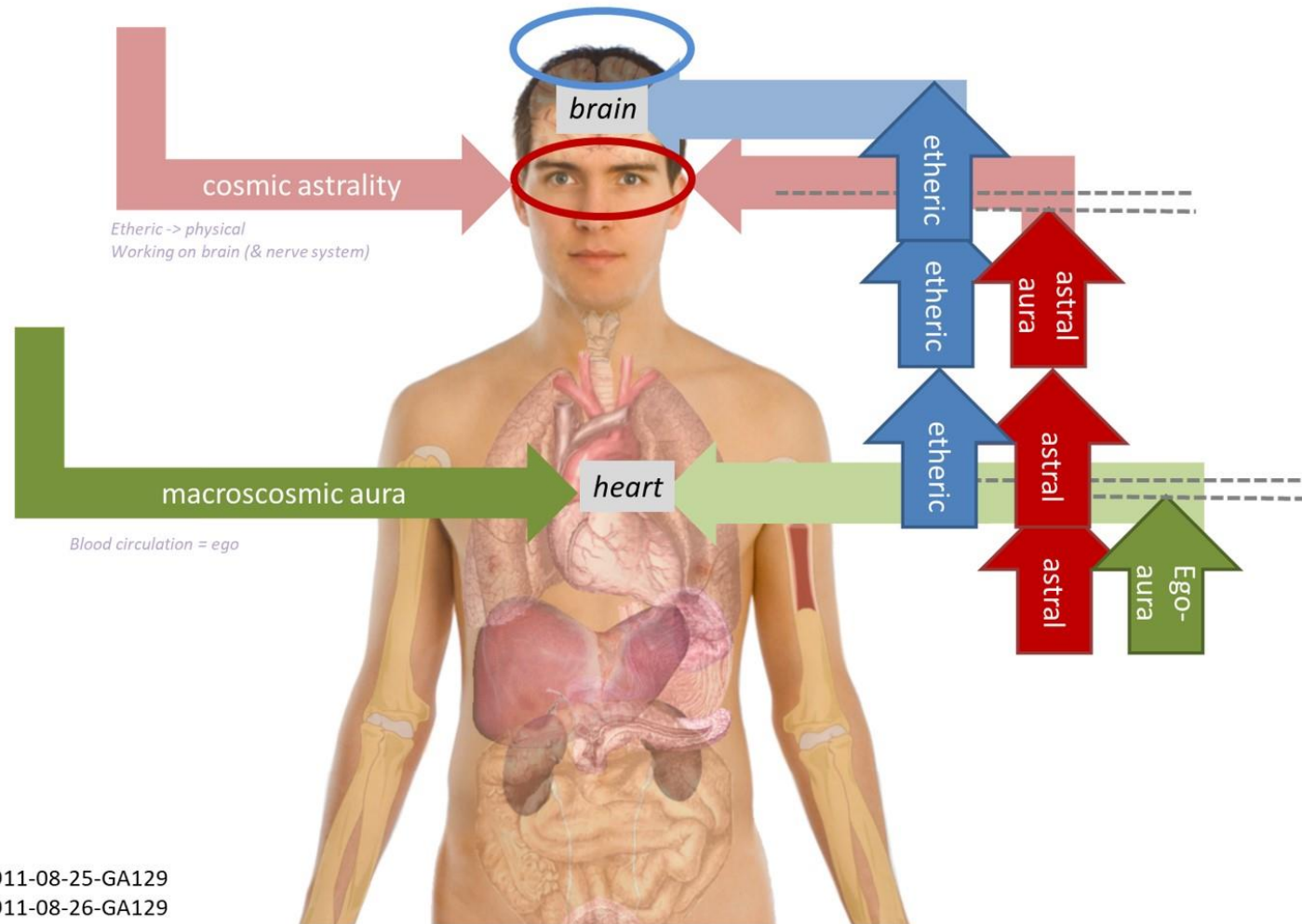


Life and chemical ethers
centrifugally

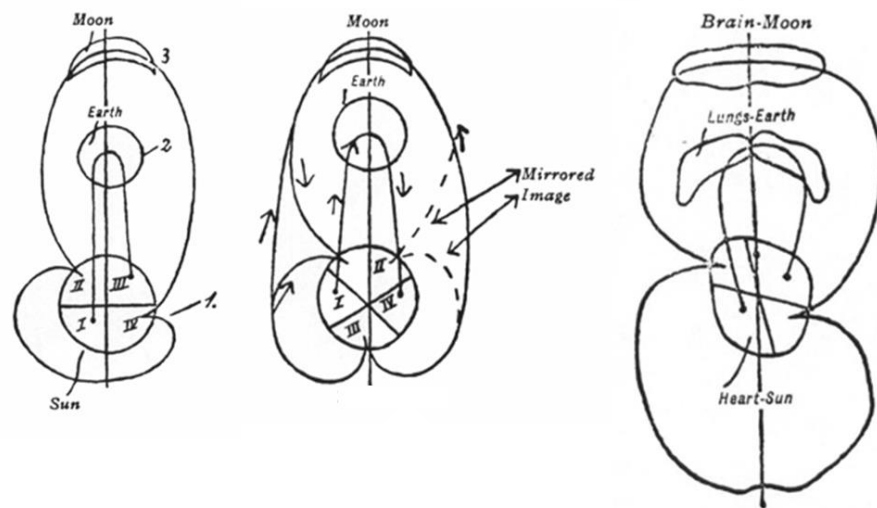


1921-04-12-GA313

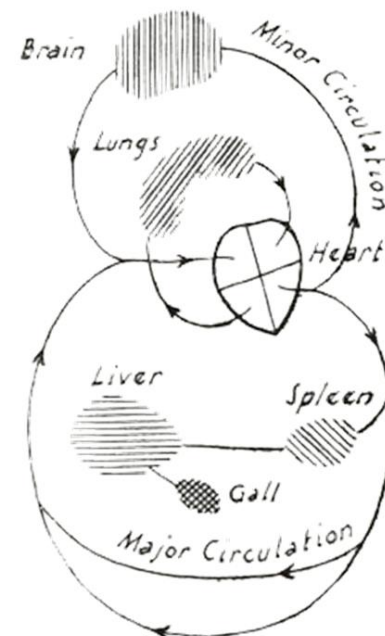
'Damming up' between head and heart



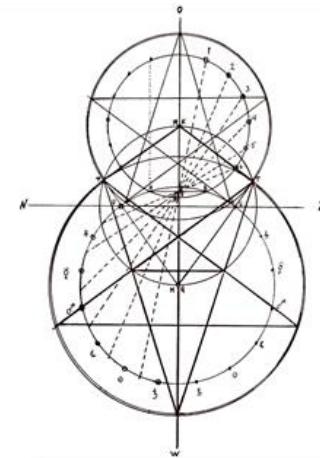
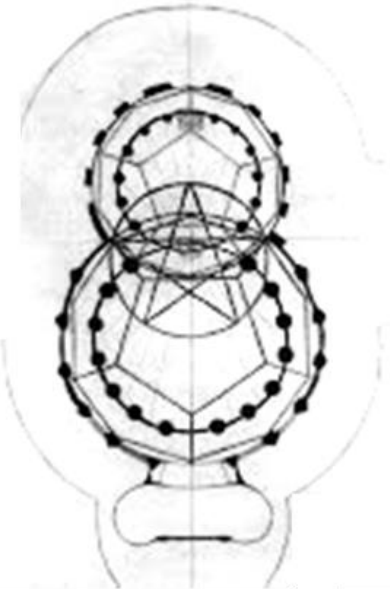
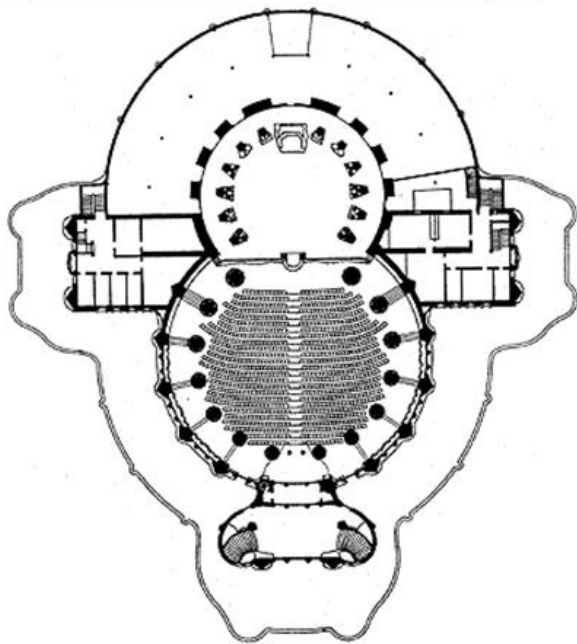
1911-08-25-GA129
1911-08-26-GA129



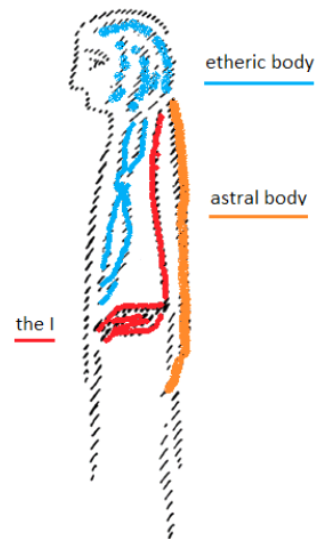
1914-07-05-GA286



1911-03-21-GA128



| | | | | | | | | |
|--|--|---------------|--|-----------------------|--|------------|--|-------------|
| Bhagavad Gita | <i>‘Behold the fire, behold the smoke, that which man through his spiritual processes turns into fire are spirits which he liberates with his death.</i> | | <i>‘Behold the day and the night. That which thou hast thyself released by turning it from a being of the night into a being of the day through thy diligence; that which comes forth out of the day enters when thou diest, into the higher world; that which thou takest with thee as beings of the night, thou forcest to reincarnate with thee again.’</i> | | <i>‘Behold what man does through the feelings and conditions of his soul, how he sets spirits free, as they are set free by the growing moon.’</i> | | fourth degree of elemental spirits, those who have to work at the annual course of the sun | |
| | | | | | | | | |
| <i>Of those who die in the sign of the fire by day, with the moon waxing, and during that half of the year when the sun is high, it is said that they do not need to return.</i> | fire | spiritual | by day | activity | waxing moon | optimism | sun is high (summer) | piety |
| <i>Those who die in the sign of the smoke, by night, with the moon waning, and when the sun is low, must return into the world.</i> | smoke | materialistic | by night | sloth and callousness | waning moon | discontent | sun is low (winter) | materiality |
| | | | | | | | | |
| <i>elemental beings released by Man or not</i> | First Class the fire elementals bound in air, water, earth. | | Second Class: day and night elementals released by man's activity and chained by his sloth (DL editor: reluctance to work or make an effort; laziness) and callousness (DL editor: insensitive and cruel disregard for others) | | The Third Class: elementals of the waxing and waning moon are released by optimism and chained down by discontent | | Fourth Class: the summer and winter elementals are released by piety and chained by materiality | |
| | | | | | | | | |
| 1909-04-12-A and B-GA110 | | | | | | | | |



| | I | astral body | etheric body |
|---------|---|-------------|--------------|
| ganglia | X | | |
| spinal | | X | |
| brain | | | X |



This I-nature is entirely supersensible and the most supersensible part we have as yet acquired, but it works through the physical.
In the intellectualistic sense the I works in our physical being chiefly through the nervous system which is called the system of ganglia, the nervous system radiating from the solar plexus.
Diagrammatically we can indicate this nervous system, this system of ganglia, this system of the solar plexus, thus (see diagram, dark shading).



Astral body

Just as the ego has its point of contact in the system of ganglia, so does the astral body have its point of contact in all those processes which are linked with the nervous system of the spinal cord.
Naturally, the nerves run through the whole body; but in the nervous system of the spinal cord we have a second point of contact. Included in this are once again all the processes connected with this spinal nervous system. I am not speaking of the cerebral nervous system. I mean the nervous system of the spinal cord which has to do, for instance, with our reflex actions and is a regulator for much that goes on in the human body. In the present context we must include all the processes regulated by this nervous system



etheric body

Now, just as the astral body is bound in this way by the system of the spinal cord and all the processes of organic life connected with it, so is the etheric body bound by the cerebral system and everything that belongs to it. Therefore, the etheric body has its point of contact by means of the cerebral system.

1917-01-14-GA174